

**Water of Leith Flood Prevention Scheme – Phase 2
Stakeholder Engagement Group
26 January 2016
Response to Actions Arising**

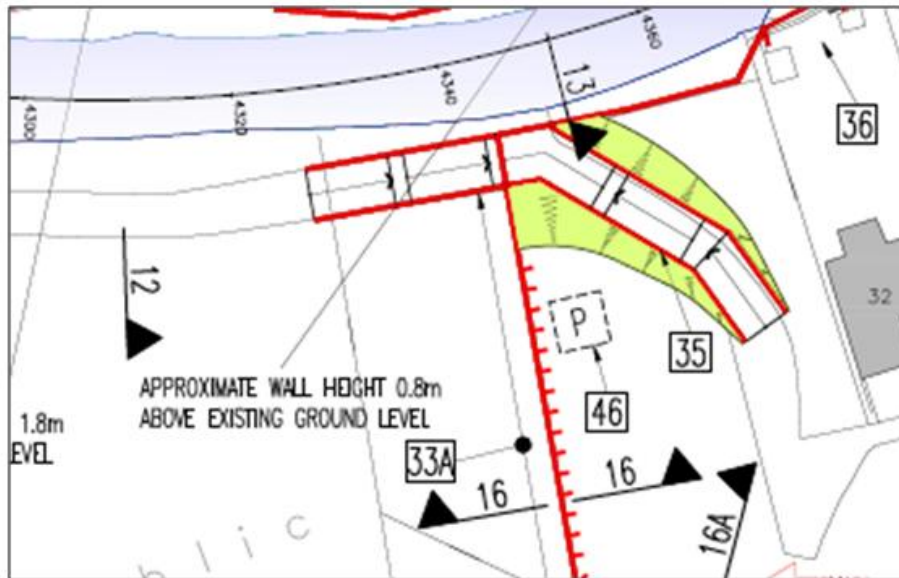
Item	Description	Action	Response
1	The meeting asked that indicative access dates to the various areas of the main works be provided	CEC	Indicative dates follow (subject to change as works progress and could be sooner or later than shown) <ul style="list-style-type: none"> - Roseburn Crescent and Roseburn Place <ul style="list-style-type: none"> o In park; July 2016 to November 2016 o Along river; August 2016 to January 2017 - Roseburn Park playground area; July 2016 to October 2016 - Corstorphine road; June 2016 to November 2016 - Riversdale Crescent; May 2016 to August 2016 - Riversdale Road; January 2017 to April 2017 - Baird Grove; September 2016 to May 2017
2	The need for the removal of two large trees on the riverside was to be further justified by CEC. CEC were to confirm that the design had not changed in this area and that the trees must be removed for the design to be implemented.	See Appendix A	Agreed that the design team would try to amend the design of the ramp area in the north east corner of the park such that the two trees may remain. If that were not found to be possible the trees (one or both) would be felled after the end of the next bird nesting season; closed
3	Agreed that a walk through Roseburn Park with Darren Wraight and Neil Gardiner to be arranged to discuss which felled trees may be retained for further use.	CEC	Walk through held and issues resolved; closed
4	CEC will check whether advice had been received from a Chartered Arboriculturalist.	CEC	Advice not required in relation to trees that are to be felled. Advice sought in relation to trees that could be utilised after felling; closed
5	Traffic cones left in Roseburn Park by drilling contractor to be removed	MCL&H	Removed, issue closed

Item	Description	Action	Response
6	Repair to potholes in Ice Rink car park	CEC	Pot holes repaired by CEC prior to the Scotland vs England game; closed
7	In regard to the embankment at the south of Roseburn Park CEC will check the limits of deviation allowed in the order but expected there would be little flexibility to amend the embankment slopes.	CEC	<p>The limits of deviation around the embankment have been reviewed and they limit any other than a very marginal change to the embankment slopes.</p> <p>The existing embankment slopes are as shown on the planning application.</p> <p>No further action required; closed</p>

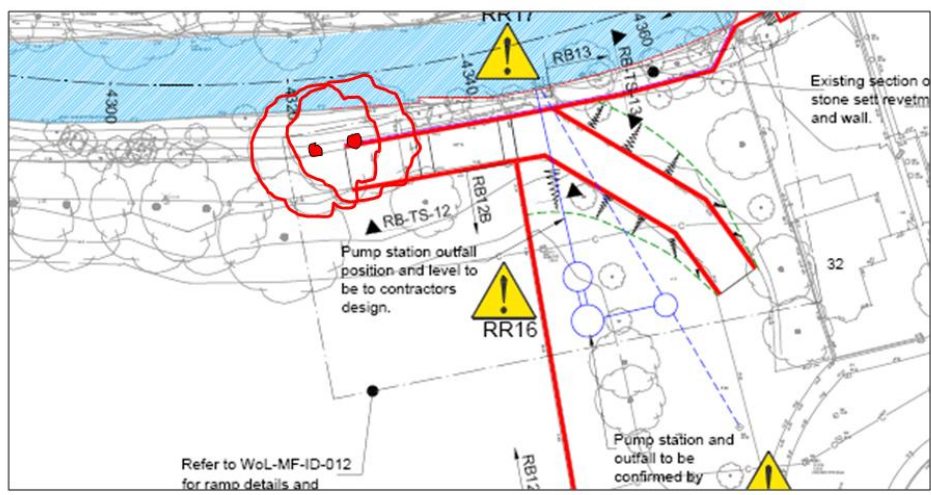
Appendix A
Roseburn Park – Tree Removal
Response to Discussion at Stakeholder Engagement Group Meeting
26 January 2016

Comparison between Planning Drawing and Tender Drawing

The following shows the relevant extract from Planning Drawing No. 69240-I5 B



The following shows the relevant extract from the Tender Drawing No. WoL-MF-DA-004 (The trees of concern are highlighted in red)



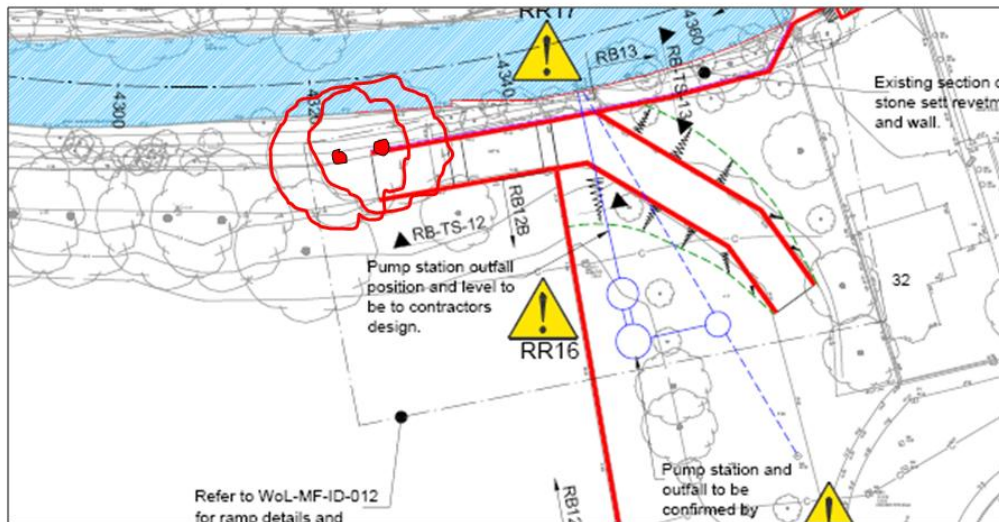
The start of the ramp is at the same river chainage on both the planning and tender drawings clearly demonstrating that the design has not changed.

Information in Regard to Removal of Trees

The planning drawings make the following statements

“Bank and channel features of value to nature conservation will be retained where practicable and mature trees will be replaced by indigenous species following the works

“Wherever possible trees will be coppiced and pollarded instead of removed to facilitate construction of the flood defences”



Of the two trees the downstream one sits directly under where the ramp is to be constructed and must be felled.

The most upstream one is very close to the construction works and the roots may be severed and prudence requires that it also needs to be felled.

However, the Contractor has advised that he will make his best efforts to retain this tree and it will not be felled prior to finalising the design and construction details in the area. If it transpires that it cannot be retained it will be felled in the next period available outwith the bird nesting season (September 2016 to February 2017)