

# Friends of Roseburn Park Newsletter

10 February 2017

## Playparks old & new: have your say

The City Council and Neighbourhood Partnership seem increasingly committed to delivering a new play park after the flood works, which was part FoRP's Park Vision consultation (see over). But what to do about the space occupied by the current play park? The Council are clear that they would not put more children's play equipment in that location, which is now outside the park flood wall.

You can have your say with our online survey:

[www.friendsofroseburnpark.org.uk/old-play-park-site/](http://www.friendsofroseburnpark.org.uk/old-play-park-site/)



## Rinkety Finc Link

Rick Finc Associates have put in a planning application notice for the development of the entire ice-rink, curling rink, and car park area. This is for 'residential and mixed use' development. We'll advertise the Public Exhibition as it happens. Meanwhile, here's all we have:

[www.friendsofroseburnpark.org.uk/ice-rink-development/](http://www.friendsofroseburnpark.org.uk/ice-rink-development/)

## Cyclewalk data loss

FoRP discussed plans to improve the separation of cyclists and walkers in the park with the City Council cycling team prior to their recent consultation on the issue. Since the Council's survey provider failed to save your responses, the Council invites you to do it again before 26 February 2017. You can find the details here:

[www.edinburgh.gov.uk/cyclewalk](http://www.edinburgh.gov.uk/cyclewalk)

The proposals (below) include some new lighting, pavement marking, a new planter, and short sections of trial segregation.

## Wandering about the future of the Park?

We have advocated that Murrayfield Wanderers' plans to relocate to the park be publicly aired, that the public nature of the park and land is understood, and that public authorities take up their role as decision-makers, not bystanders. More as we hear it. Friends of Roseburn Park would like to know the views of stakeholders (groups or individuals):

[chair@friendsofroseburnpark.org.uk](mailto:chair@friendsofroseburnpark.org.uk)



## Funding FoRP

Hundreds of people brought and ate cake and participated in games this year. You can see all the people we needed to thank on the website (5 September). In addition to having fun we raised money for our ongoing costs (about £400 from the cakes and raffle and £200 raised by Tesco staff from the mini-Olympics). The summer disco broke even in spite of being held when most had just left on their holidays.

You can donate securely online with our new BT Mydonate page:

[www.friendsofroseburnpark.org.uk/donate/](http://www.friendsofroseburnpark.org.uk/donate/)



## Park Vision and Consultation update

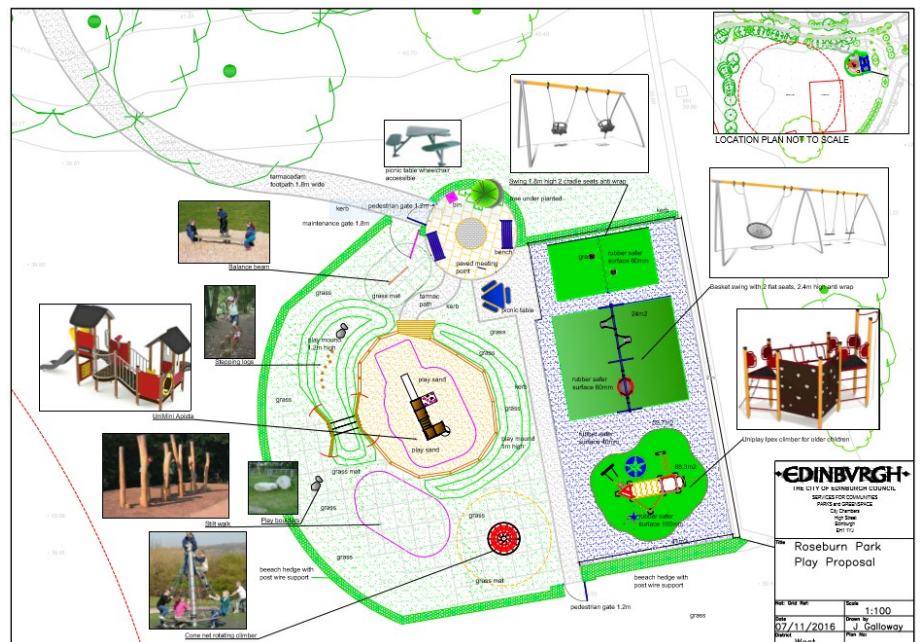
Our consultation on a new vision for the park received 141 individual responses and 189 children at Roseburn Primary School participated in class-based consultation. We also spoke to various local groups. Most popular ideas were a café, shelter with seating and new play park. You can see the full report here:

[www.friendsofroseburnpark.org.uk/files/2016/04/SurveyResults.pdf](http://www.friendsofroseburnpark.org.uk/files/2016/04/SurveyResults.pdf)

The children's consultation made some play park suggestions and the Council will seek to include a tunnel and a cone net rotating climber as a result. There will also be a beech hedge around the play park (see below). We are fundraising for a nearby bench (see over) and for the proposed café. We already have a West Neighbourhood Partnership Community Grants Scheme towards the costs of our making a planning application for the proposed café:

[www.edinburgh.gov.uk/info/20067/planning\\_applications](http://www.edinburgh.gov.uk/info/20067/planning_applications)

(Select View & Comment... (twice) then search for 'Roseburn Park')



## Keeping us Right

We currently have 275 members, about 10% of whom came to the AGM. The Board of Trustees is now Valerie Forbes, Neil Gardiner, Pete Gregson (Chairperson), Barbara Knowles (Secretary), Hamish Ross (Treasurer), John Yellowlees. All our governance detail is on the website (under 'Management Info').

And you can join for free, comment, donate, or just stay in touch:

[www.friendsofroseburnpark.org.uk/](http://www.friendsofroseburnpark.org.uk/)

[www.facebook.com/roseburnpark](https://www.facebook.com/roseburnpark)



## Other updates

FoRP helped facilitate negotiations and thanks to the good offices of Cllrs Ross & Balfour the City Council agreed to clean up the **asbestos in the armoury**.

Thanks to a local resident's inspired campaign, some **trees** scheduled for destruction in the floodworks have been saved. FoRP are arguing for a better mix of replacement trees.

**Jane Stevenson & Alette Willis** retired as Trustees after contributing greatly to FoRP. **Thanks**, Alette and Jane!